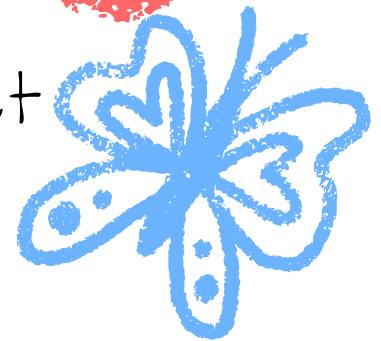


EDUCARE DC

2025 ANNUAL REPORT

Building Pathways & Creating Impact



Dear Friends,

As we reflect on 2025, we do so with deep gratitude and pride in the continued growth and evolution of Educare Washington DC. Grounded in our commitment to Excellence in Everything, this year has been one of intentional investment—both in people and in the systems that sustain high-quality early learning.

A defining highlight of 2025 was the strengthening of our executive leadership team. We were proud to welcome two exceptional leaders, including the creation of a new and critical role—Senior Director of Professional Development. This investment reflects our belief that our greatest impact begins with our educators. By elevating professional learning to the executive level, we are building a stronger, more sustainable pipeline of talent and leadership across our organization.

That commitment is evident in our continued focus on developing entry-level educators. Through structured training, coaching, and mentorship, we are ensuring that those entering the field are not only supported but empowered to grow into the next generation of early childhood leaders. This work is essential—not only for Educare DC, but for the broader early childhood system we seek to influence.

As we close this program year, we also mark a significant milestone: the completion of our 12th year of operations and the beginning of our 13th year serving children and families in Washington, DC. This moment is both a celebration and a call forward. For more than a decade, we have stood alongside families, educators, and partners to eliminate the opportunity gap—and we remain as committed as ever to that mission.

The children and families we serve continue to inspire us daily. It is an honor to do this work in partnership with a community that believes so deeply in what is possible when we invest early and invest well.

Thank you for your continued partnership, belief, and support. The future we are building together is bright.

With gratitude,

Jamal Berry
President/CEO



Rick Calder
Board Chair





Planting a seed in DC to grow Early Childhood Education



Educare DC's mission is to eliminate the opportunity gap for young children experiencing poverty in Washington, DC, and to help them develop the skills necessary for success in kindergarten and beyond. We are a proud member of the national Educare Network (EN) which is composed of 25 independently operated, high-quality, research-based early childhood schools.

Our vision is for all children in DC to have access to a high quality early childhood education that helps them flourish throughout their lives. Using a holistic approach, we partner with families to identify their goals and build goal-oriented relationships that support family wellbeing. We follow research-based best practices for instruction to maximize student outcomes, and provide resources and support to help children learn and grow, both at home and in the classroom. Our commitment to using data and research ensures that we work toward continuous improvement for the families we serve.

Since Educare DC first opened its doors in 2012, in the Parkside neighborhood of DC's Ward 7, our impact has grown from serving 160 children at a single location to serving 375 children and their families across two campuses and four partner centers annually. In addition to our core work as an education program, we support healthy families, workforce development, training, and advocacy within our school and across the city.



"In 2025, we were intentional about planting seeds—investing deeply in our teachers, strengthening the foundation of our classrooms, and nurturing the conditions for early childhood education to truly grow in Washington, DC. We know that when we invest in educators at the ground level, we are cultivating something far greater—a system that can sustain, expand, and flourish for generations of children and families to come."

Jamal Berry, Educare DC
President/CEO



2012 Educare DC Opens at 640 Anacostia Ave. NE



Educare DC has planted seeds that have grown students, families, and teachers beyond 640 Anacostia Ave.

*how much Educare DC funded into accounts for SY24-25

**number of teachers who have completed the fellowship/program

2015 my529 Future Scholars launches

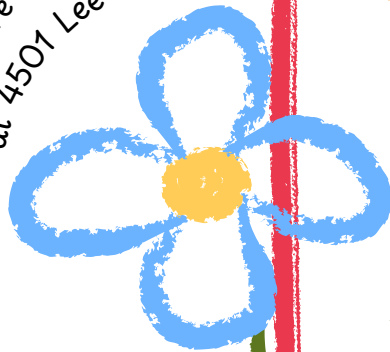


*\$35,000

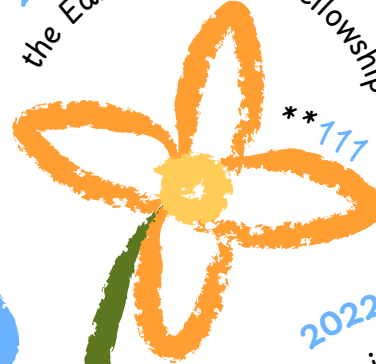
2018 Educare DC Partners with local DC Child Care Centers



2020 Educare DC - IDEA Opens at 4507 Lee St. NE

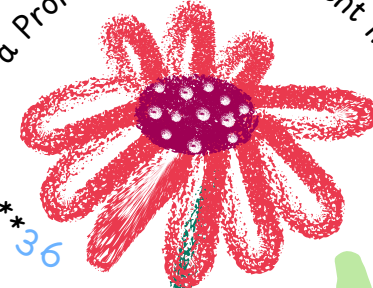


2020 Educare DC launches the Early Educator Fellowship



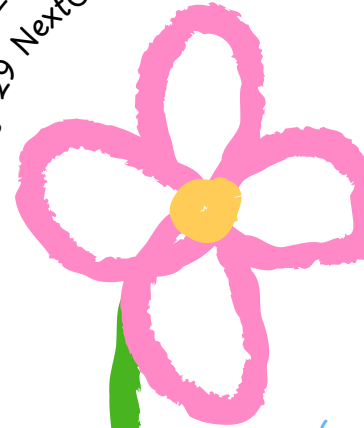
**117

2022 Educare DC creates a Professional Development Institute



**36

2025 Educare DC my529 NextGen launches



*\$7,063.96

4

2025 Impact Snapshot

Children and Families Served
in *2025: **563**
since **2012: **1905**

Average monthly enrollment
93%
Early Head Start,
Infant/Toddlers
79%
DC Universal PreK

Percentage of Head Start
eligible children served
94%
Early Head Start, Infant/Toddlers
41%
DC Universal PreK

Percentage of children
receiving health screenings
100%
Medical screenings completed
100%
Dental screenings completed (3+)

124,347
Complete &
nutritious meals
served

433 food kits
270 coats
Distributed
to Families

*students and families served across Educare DC and Child Care Partnership sites

**students and families served reflects new and returning students each SY

Nurturing Healthy Beginnings & Building Strong Futures

At Educare DC, we know that a child's ability to learn, grow, and thrive begins with strong, holistic support. During the 2024-2025 Head Start grant year, our Comprehensive Services team remained steadfast in ensuring that every child and family received the care, resources, and opportunities they deserve—laying the foundation for lifelong success. From the very start, our focus was clear: every child, every family, fully supported. This commitment came to life through our unwavering dedication to health and wellness. Every enrolled child received the care they needed to begin their educational journey ready to thrive.

Our leadership in Comprehensive Services also reached beyond our classrooms and into the national spotlight. This year, our Director of Comprehensive Services, Patricia Dela Torre, was selected to present at the National Head Start Association Fall Leadership Institute. Through the session, "Fueling Futures: Nutrition, Wellness, and Policy," Educare DC shared its approach to advancing nutrition standards and wellness practices—positioning our work as a model for programs across the country. This recognition shows we're not only practitioners but also thought leaders shaping the future of early childhood systems.

To further strengthen our approach, we expanded our educational offerings by adopting a third curriculum, The Educated Birth, providing mothers with comprehensive prenatal and postnatal guidance. At the same time, we partnered closely with our Enrollment Team to streamline the application process—reducing barriers and making it easier for families to access the services they need.

Our work continues to resonate beyond Educare DC. This year, our program model was featured at both the Region III T/TA Network Virtual Series and the 2024 Educare Network Meeting in Sioux City, Iowa—sharing insights and best practices with peers across the country. These opportunities affirm that our efforts are not only creating meaningful change locally but also contributing to broader conversations around maternal health, early childhood development, and innovation in comprehensive services.



Every screening completed, every meal served, every workshop facilitated—each is a step along a larger pathway. A pathway where children are healthier, families are empowered, and communities are stronger.



At the heart of our work are families—and programs like **Moms2Be** demonstrate what meaningful engagement looks like in action.

This year, Moms2Be reached full enrollment, creating a vibrant, supportive community for expecting and new mothers. Through nine thoughtfully designed workshops, families engaged in learning experiences that empowered them with knowledge and confidence. A standout was the three-part early childhood development series, where parents explored:

- The foundational principles of early development
- Strategies to advance physical and intellectual growth
- Ways to nurture social and emotional well-being

These sessions weren't just informative—they were transformative, equipping families with tools to support their children during the most critical stages of development.

Meaningful Impact through Strategic Partnerships & Capacity Building

This impact was deepened through intentional partnerships and investments in capacity building. By collaborating with trusted community leaders—including Ms. Ashley Jones, a former CDA teacher, and doula Janelle Peoples—Moms2Be participants received specialized training rooted in both professional expertise and lived experience. These partnerships strengthened the program's ability to meet families where they are, with care that is both practical and culturally responsive.

Community and celebration remained central to the Moms2Be experience. Families gathered for our annual Baby Shower, a joyful moment that honored new beginnings, and came together again at the End-of-Year Celebration at Parkside, reflecting on their journeys and the bonds formed along the way.

Through Comprehensive Services, Educare DC continues to turn intention into impact—ensuring that every child not only has access to opportunity, but the support to fully realize it.



Pathways to STRONG PARTNERSHIPS

Early Head Start - Child Care Partnerships (EHS-CCP): Elevating Partnerships, Ensuring Excellence

Program Year 7 marked a transformative chapter for Educare DC's Early Head Start-Child Care Partnerships (EHS-CCP) program—one defined by transition, resilience, and intentional systems strengthening. Throughout the year, the program continued to deliver high-quality, comprehensive services to infants, toddlers, and families across community partner sites.

This year began with one of the most significant transitions in the program's history, as more than 60 children moved across sites. Despite this shift, the CCP team responded with focus and collaboration—working closely with ERSEA, Family Engagement, and site leadership to stabilize operations and maintain excellence. As a result, full enrollment was achieved and sustained, attendance rates were stabilized at 85% across most partner sites, and eligibility systems were strengthened through consistent monthly monitoring. These efforts reflect not only operational resilience, but a shared commitment to accountability and continuous improvement.

At the same time, CCP advanced a longstanding priority: elevating family voice in program governance. The launch of the first dedicated CCP Policy Council marked a significant milestone—creating space for parents to actively participate in decision-making, strengthening shared leadership structures, and increasing representation from CCP families. This progress reinforces Educare DC's belief that families are not only participants in the program, but essential partners in shaping its success.

To support program growth, CCP also made critical investments in workforce development and capacity building. As team members transitioned into new roles to support expanding sites, systems were put in place to ensure continuity of quality. Traveling Teacher Aide (TTA) support was extended across partner sites, working alongside Education Mentors to provide enhanced classroom coaching. These efforts were further reinforced through reflective supervision and data-informed support, ensuring that educators remained equipped to deliver strong instructional experiences.

"When I think about a high-quality early childhood program, what matters most to me are passionate and knowledgeable teachers, a safe and nurturing environment, and a program that encourages parents to be actively involved in their child's learning journey."

Educare DC - Parkside Parent

"Being in the Educare program has brought me a level of peace I didn't even know I was searching for. It gave me a village I didn't realize I was missing. The way they see, support, and care for the entire family is truly honorable and rare. It feels like being wrapped in an extra layer of love and protection during times when you need it most. I've grown to deeply appreciate and genuinely love my family engagement team...they have meant more to me than words can fully express."

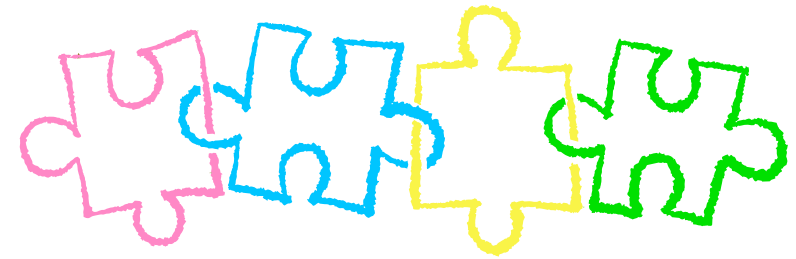
Educare DC - CCP Parent



Growing Participation & Strengthening Community

Family engagement at Educare DC is more than participation—it is about building meaningful connections, strengthening leadership, and creating experiences that bring families and staff together as a community.

While engagement remained steady early in the year, participation grew significantly over time, with June alone accounting for **57% of total participation**. This growth reflects not only increased attendance but a deepening sense of trust, connection, and community among families.



Family Impact Story

"Educare has had a meaningful impact on both my child and our family. When he enrolled, he had significant medical needs and developmental challenges. With the comprehensive support and services provided, he has made tremendous progress—he is now able to eat, walk, and is beginning to communicate. These milestones once felt far away, and today they give our family hope for his future.

The family engagement team has been incredibly supportive, always offering a listening ear, encouragement, and helpful resources. I am especially grateful to the entire classroom team for their patience, dedication, and commitment to his growth. Because of their work, he is gaining the fundamentals needed to prepare for public school.

Educare's leadership and staff have created a welcoming environment where I feel comfortable sharing concerns and being involved in my child's journey. I am deeply thankful for the support, partnership, and care our family has received."



Throughout the year, families engaged in a range of experiences—from Parent Cafés and committee meetings to large-scale events that fostered connection and joy. One standout moment came in June, when **154 children, families, and staff participated** in a Family Field Trip at Play EC. This shared experience—filled with play, exploration, and community—extended learning beyond the classroom and strengthened relationships across families and staff alike.

Each event, each connection, and each leadership opportunity strengthens the foundation of community at Educare DC. On average, about **158 participants** engaged per month. As engagement continues to grow, so does the impact—empowering families, elevating voices, and ensuring that every child is supported by a network of care that extends far beyond the classroom.

Beyond events, Educare DC continues to deepen its impact through intentional programming that supports the whole family. A powerful example of this is the **Father Figures Initiative**, designed to actively engage fathers, grandfathers, uncles, and male mentors in their children's early learning journey. Through workshops, support groups, and interactive activities such as Dad Drop-Off Days, classroom reading, and community events, the initiative creates meaningful opportunities for father figures to build stronger connections with their children and school community. Rooted in education, mentorship, and community-building, **the program equips father figures with tools to support their child's academic and social-emotional development while fostering a network of peer support.** By promoting leadership, advocacy, and consistent engagement, the initiative reinforces the vital role male role models play in shaping positive outcomes for children and families.



Behind these efforts is a dedicated Family Engagement team committed to continuous growth and excellence. This year, the team strengthened its own connection through a Fall Festival gathering and its first off-site Winter Retreat—creating space for reflection, team building, and shared purpose. Team members also engaged in ongoing learning through quarterly professional development and monthly training opportunities, ensuring they remain equipped to support families with intention and care.

Equally important is the role families play as leaders within the program. Parents were active contributors to the 2024-2025 Self-Assessment process—participating in focus groups, sharing feedback on enrollment experiences, and interviewing key ERSEA staff members. Parent leaders also partnered with Family Engagement staff to vet community partners, reinforcing a model where families are not just participants, but decision-makers and co-creators of program success.

Our Policy Council Chair, Family Engagement Staff and Child Care Partnership Education Mentor with Portia Kennel (Mother of Educare)

Building Knowledge & Strengthening Impact

Educare DC's commitment to professional development in 2025 reflects a strategic investment in its greatest asset—its people. Through targeted training, leadership pathways, and ongoing learning opportunities, staff were equipped not only to grow in their roles, but to lead change across the early childhood field.

A cornerstone of this work is the Early Educators Fellowship (EEF), where 19 fellows completed the program in Spring 2025. By the end of the fellowship, participants demonstrated significant growth across key areas of knowledge:

- 85% in DC early childhood policy
- 71% in national policy
- 79% in racial equity
- 71% in gender in early childhood

These gains reflect more than learning—they represent a shift in mindset. Fellows evolved from focusing on individual classroom needs to advocating for broader systems change, using their knowledge to influence policy, equity, and professional standards.

This growth extended into core professional competencies. 85% of fellows rated their communication skills as moderately to extremely effective, demonstrating increased confidence in navigating conflict, building relationships, and leading with clarity.



"This experience has given me a sense of awareness. I see that we are not alone in the field and others are advocating for us."

Cohort 5 Fellow



Beyond the fellowship, Educare DC's broader professional development efforts reached staff across all levels:

100% of classrooms at IDEA and Parkside were supported by Traveling Teacher Aides (TTAs), impacting 24 classrooms

20% of TTAs (3 of 15) earned their Child Development Associate (CDA) credential, strengthening instructional quality and career pathways

18 training sessions engaged staff members, building skills in communication, professionalism, and high-quality teaching practices

More than 100 embedded professional development sessions were delivered, reinforcing learning through real-time coaching and support

134 staff members participated in Pre-service training, ensuring strong program alignment at the start of the year

16 staff members benefited from the Tuition Assistance Program, advancing their education and long-term career growth

Together, these efforts demonstrate a comprehensive, multi-layered approach to workforce development—one that blends formal training, on-the-job learning, and long-term career investment.

Amplifying Voices & Driving Impact

In 2025, Educare DC launched its Public Affairs Department, aligning public engagement and communications under a single, coordinated strategy rooted in our mission to close the opportunity gap. This integration reflects a core belief: strong public systems depend on informed decision-making and clear public understanding. To support early childhood education, especially in a volatile fiscal and policy environment, we work to share accurate information, elevate the stories of our community, and communicate the impact and importance of public funding clearly.

This work unfolded during one of the most uncertain budget years in recent District history. Local revenues declined, competition for limited resources intensified, and programs across housing, health care, and human services faced deep reductions in public funding. In this context, Educare DC focused on supporting the stability of the District's most critical early childhood investments—the Pay Equity Fund, the child care subsidy program, and PKEEP—programs that help stabilize the workforce, support access for families, and sustain quality across the mixed-delivery system. These efforts contributed to meaningful outcomes.

Educare DC's strength lies in its ability to connect on the community level impact with policymakers, program design, and implementation. This ensures that decisions about budgets, policies, and systems remain grounded in the needs of children, families, and educators. In 2025, this approach helped protect progress and strengthen understanding, laying a solid foundation for the years ahead.



"I enjoyed my time doing the Parent Ambassador program. It laid the foundation for me to be more civically involved in my community and to become a more confident advocate, more informed citizen, and an advocate for my child."

**Educare DC Parent Ambassador -
Charlee Vinson**



Educare DC Ambassador Programs

At the center of this work were the voices of those most directly affected by public systems and programs. Through Educare DC's **Parent Ambassador Program**, parents shared firsthand experiences during DC Council hearings on issues such as access to public benefits and housing stability for pregnant mothers.

Building on this model, Educare DC launched the **Teacher Ambassador Program**, creating new opportunities for educators to contribute their classroom expertise to public education efforts and help inform a broader understanding of early childhood needs.



A Voice Beyond the Walls

Educare DC also played a leadership role in addressing inequities in access to special education services for pre-K students enrolled in community-based organizations. By convening the DC Pre-K Coalition, organizing coordinated testimony, and participating in DC Council Performance Oversight hearings, Educare DC helped bring greater visibility and attention to this long-standing issue. Complementing this work, Educare DC leaders were interviewed by the Urban Institute to inform its needs assessment for OSSE's PDG Birth-to-Three grant, supporting system-level analysis and improvement.



Educare DC - IDEA

NAEYC
Accreditation
95%
Overall Program
Pass Rate

ITERS Score of 2025
6 out of 7



“My hope is that children in my care are receiving the highest quality of learning. Through my teaching I hope that my students are impacted in many positive ways. I believe that a priority of a healthy start to children’s lives is learning self-regulation skills and knowing – not just feeling – that they are in a safe space with safe people.”

Sharnetta Meyers - Lead Teacher

Inspiring Curiosity Through Exploration

At Educare DC, learning comes to life through curiosity, exploration, and meaningful engagement. In 2025, this vision was exemplified through participation in the Early Science Initiative—an innovative program within the Educare Learning Network in partnership with Start Early and the University of Miami Early Science Initiative Team, with support from General Motors.

Over a six-month period, students engaged in hands-on, open-ended science experiences centered around the theme of transportation. These explorations encouraged children to ask questions, test ideas, and make connections to the world around them—laying an early foundation for critical thinking and problem-solving.

At the same time, teachers participated in monthly communities of practice, strengthening their instructional approaches and deepening their ability to facilitate inquiry-based learning. These collaborative sessions not only enhanced teacher practice, but also increased student engagement and fostered stronger connections between classrooms, schools, and families.

Growing Investment & Sustaining Impact.

In 2025, Educare DC experienced meaningful growth in philanthropic investment, strengthening both the scale and stability of our work. Thanks to the generosity of individual donors, foundations, and corporate partners, we were able to deepen program delivery across all sites while continuing to build long-term organizational capacity.

A key highlight this year was the expansion of multi-year funding commitments, which provides essential stability and allows us to plan with greater confidence. These sustained partnerships enable us to invest strategically in staff development, family engagement, and continuous program improvement, ensuring that impact is not only immediate, but enduring.

As our funding base continues to grow and diversify, we remain committed to responsible stewardship, transparency, and measurable results. We are profoundly grateful to the community of partners who are investing alongside us, not just in a single year of work, but in a long-term vision to close the opportunity gap for young children and families.



Educare DC 9th Annual Learning Event

Educare DC's 9th Annual Learning Event, held on May 29, 2025, at the Army & Navy Club, brought together distinguished professionals and community leaders united in advancing our mission to close the opportunity gap for young children across the District.

We were honored to feature Dr. Iheoma U. Iruka, an award-winning tenured professor in the Department of Maternal and Child Health at the UNC Gillings School of Global Public Health and Founding Director of the Equity Research Action Coalition at the Frank Porter Graham Child Development Institute at the University of North Carolina at Chapel Hill.

Dr. Iruka's initiatives reflect the very mission of Educare DC and her keynote offered powerful research-driven insights on early childhood development, and systems change, reinforcing the importance of ensuring every child has the opportunity to thrive.



Measuring Growth + Strengthening Futures

Understanding our families to Strengthening our Impact

Our community is largely English-speaking, with approximately **99% of families identifying English** as their primary language.

In **95% of households, the primary caregiver is the mother**. Family structures are diverse, reflecting the richness and complexity of our community—only about 18% of households follow a traditional two-parent, two-child model.

Caregivers bring a wide range of educational backgrounds, with **62% reporting some college experience or higher**, demonstrating a strong foundation for continued growth and opportunity.

Employment patterns vary: **42% of caregivers are employed full-time**, while approximately 41% are currently unemployed, and 14% work part-time.

Educare DC's 2024-2025 data tell a clear and compelling story—one where strong family engagement and high-quality classroom experiences work together to drive meaningful outcomes for children.

From the very beginning of each child's journey, families are deeply engaged as partners in learning. Through early family interviews conducted within the first 45 days of enrollment, alongside ongoing assessments and classroom observations, we gain a comprehensive understanding of each child's development. This integrated approach—combining tools such as DECA, PLS-5, Bracken, CLASS, and ITERS-3—ensures that every child's progress is both measured and supported with intention. The results speak to the power of this model.

Across both Educare DC sites, children demonstrated significant gains in social-emotional development, with far fewer children ending the year with concerns than when they began.

- At Parkside, behavioral concerns **decreased by 40%** among Pre-K students, while infants and toddlers saw an even more dramatic **74% reduction** in social-emotional concerns.
- At IDEA, social-emotional concerns **decreased by 43%**, alongside notable growth in key protective factors—Attachment increased from 70 to 84, Self-Control from 67 to 85, and Initiative from 79 to 84.

These improvements reflect more than data points—they represent children building confidence, forming secure relationships, and developing the skills needed to navigate their world.

Together, these outcomes reflect a powerful truth: when families are engaged, educators are supported, and systems are aligned, children thrive. At Educare DC, data is not just measured—it is used to inform action, strengthen practice, and ensure that every child is on a clear pathway to success.



Appreciation of Excellence

Educare DC's work is made possible through the generosity of our donors and partners. Your investment plants seeds that grow a pathway to success—driving measurable growth and creating meaningful impact for children and families.

Thank you to the following donors who supported Educare DC's Annual Fund between January 1, 2025 and December 31, 2025.

\$100,00+

Anonymous
Bainum Family Foundation
Buffett Early Childhood Fund
Frechette Family Foundation
Stranahan Foundation
The Alexander and Margaret Stewart Trust
The J. Willard and Alice S. Marriott Foundation

\$25,000-\$99,999

Alliance for Early Success
Anonymous
Barbara Brown
Walter and Deborah Cohn
First Five Years Fund
Peter H. & Dana Gunn Winslow Foundation
The Diane and Norman Bernstein Foundation

The John G. and Jean R. Gosnell Foundation
The Morris and Gwendolyn Cafritz Foundation
The Richard E. and Nancy P. Marriott Foundation
Trust for Learning

\$5,000-\$24,999

Laurie and Rick Calder
Jennifer Cockburn
Pyper Davis and Eric Imperial
Edward Doheny
Bill Hall
Thomas D. Klingenstein and Nancy D. Perlman Family Fund, Inc.
Pepco an Exelon Company
William P. Roberts III
Anita and Frank Rothwell
The Andrew and Julie Klingenstein Family Fund
The HABE Foundation
The Herb Block Foundation

The PNC Foundation
Walter A. Bloedorn Foundation
Washington Area Women's Foundation

\$1,000-\$4,999

Tifarah Allen
Suzanne Anthony
Anthony Family Designated Fund
Sarah and John Barpoulis
Pamela and Michael Bless
Burnett Family Fund
Gerard Byam
Judith Edstrom
Sabra Gelfond
Javed Hamid
Dr. Brenda Jones Harden
Michael Hickey
Khosi and Patrick Mathias
Michael Missal
Steve Nelson
Clyde and Christina Northrop
Leslie and John Oberdorfer

Jessie Rasmussen
Diana and Bruce Rauner
Dontai Smalls and Jennifer Mausekapf
Sterling Speirn and Diana Aviv
Bernie Treidl
The Richman Foundation, Inc
United Methodist Women of National United Methodist Church

\$1-\$999

Eric and Suzanne Adler
Justin C. Banea
Tonya Banks
Andrew Beath
Nia Bodrick
Jan Boykins
Alison Cave
Brandy Clark
Marie Cohen
Maya Coleman
Hester Decasper
Ursula and Makarand Dehejia

\$1-\$999 (cont.)

Colonel and Mrs. Edward
DeShields, Jr.
Michael J. Dellapa
Kelly Dibble
Farid and Farida Dossani
Angel Elliott
Peter Farrell
Maxine and Jeffrey Freund
Swetha Gupta
Frona Hall
Zunobia Hakim
Ulrich Hewer
Kathy Hollowell-Makle
Theodore Kassinger
Jeffrey Katz
Stephen Klein
Jeannette Leighton
Barbara Ledyard
Eileen Matthews
Donna Murphy
Nancy and Mike Nannes
Edward Nassim
Mehmood Nathani
Tyler F. O'Connor
Myra Page-Msibi
Paula Panton
Daniel Pedersen
Guy Pfeffermann
Triet Pham
Rose Catherine Pinkney
Lesley Poole
James P. Rathvon
Ramin Riahikhoee

Amy Schiffman
Rachel Schumacher and Jason
Tulley
Julian Ivan Scott
Alex Simpson
Leigh-Kirstin Sims and Mahmoud
Aly Hassan Khalil
Christopher T. Smith
Danielle Smith
Laura Farrell Smith
Peter Stromberg
Karli Swift
Pamala Trivedi
Ellen Webne
Robin Weisman
Elisabeth Wiramidjaja



Caroline A. Davis, empowered
generations of women through
visionary leadership,
entrepreneurship, and lifelong
service.

Educare DC's Legacy Society

Established in 2022 as a result of two generous planned gifts to the 10th Anniversary Campaign, the Educare DC Legacy Society recognizes donors who are making a big impact on children and families with a future gift. Thank you for funding our future!

Have you already included Educare DC in your estate plans? Let us know or reach out if you have questions about making a legacy gift.

Contact: development@educaredc.org or 202-803-5147.

Special thanks in honor of:

Andy and Julie Klingenstein

Special thanks to our in-kind donors and volunteers

PNC

The Peter B. Teeley Children's Charities Foundation

The World Bank Group

Truist Bank

Vanguard



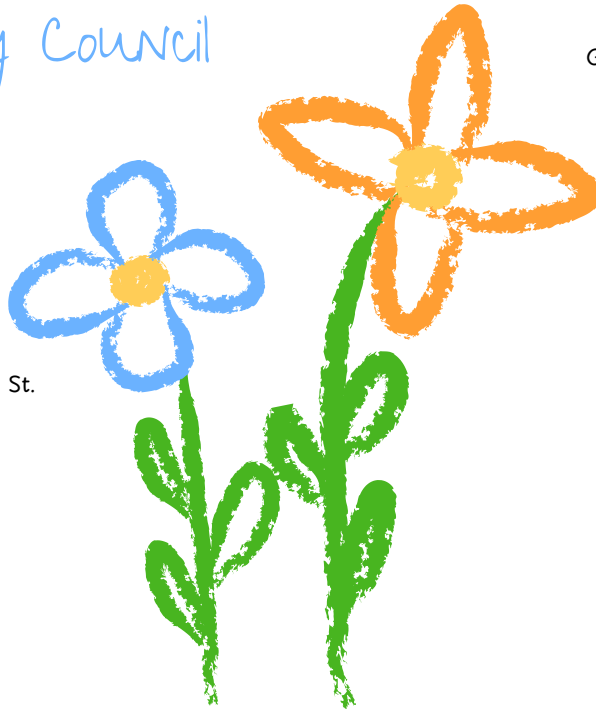
Board of Directors

Rick Calder, Chair
Tifarah Allen
Jan Boykins
Charis Drant
Angel Elliott
Peter Farrell
Zunnobia Hakim
Brenda Jones Harden
Khosi Mathias
Lesley Poole
Jessie Rasmussen
Rachel Schumacher
Leigh K. Sims
Charles Song



Parent Policy Council

Ebony Jeje, Chair
Pamela Amusa, Vice-Chair
Olajumoke Olayinka, Reporting Secretary
Alondon Gollman, Recording Secretary
Community Representatives
Katanya Jones, Educare CCP - St. Timothy's
James Goddard, Far SE Family Strengthening Collaborative



Community Partners



Comprehensive Services and Family Support

Bowie State University
Colgate-Palmolive-Bright Smiles Bright Future
DC Breastfeeding Coalition
DC Department of Health
DC Primary Care Association
DC WIC
Dreaming Out Loud
Early Childhood Innovation Network (ECIN)
Early Stages
East River Family Strengthening Collaborative
Educare Network
Generation Hope
Georgetown University School of Medicine
FRESHFARM
Healthy Babies
Healthy Futures
Healthy Generations Clinic
IMPACT DC
LIFT DC
Mamatoto Village
Martha's Table
Mary's Center
MECCA Group of DC
National Therapy
Paternally Yours- Health Help Me Grow Prevention of Blindness
Society of Metropolitan Washington
Stork's Nest
Strong Start
Thrive by Five
Towson University
WISE Center - Medstar Georgetown University Hospital

Instruction and Enrichment

Children's Art Studio
Community Foodworks
DC Association for the Education of Young Children (DCAEYC)
DC Head Start Association (DCHSA)
Early Science Initiative (ESI)
IDEA Public Charter School - CDA Program
Jumpstart for Young Children
Office of the State Superintendent for Education (OSSE)
PNC
Teaching Strategies
Trinity Washington University

Advocacy

Alliance for Early Success
DC Action
DC Early Learning Collaborative
DC Fiscal Policy Institute
First Five Years Fund
National Head Start Association
National Women's Law Center
PreK Coalition
Spaces in Action
Under 3 DC
Zero to Three

Financials & Audit



CPAs & ADVISORS

INDEPENDENT AUDITOR'S REPORT

To the Board of Directors
Educare DC
Washington, D.C.

Opinion

We have audited the accompanying financial statements of Educare DC (Educare), which comprise the statement of financial position as of June 30, 2025, and the related statements of activities and change in net assets, functional expenses and cash flows for the year then ended, and the related notes to the financial statements.

In our opinion, the financial statements referred to above present fairly, in all material respects, the financial position of Educare as of June 30, 2025, and the change in its net assets and its cash flows for the year then ended in accordance with accounting principles generally accepted in the United States of America.

Basis for Opinion

We conducted our audit in accordance with auditing standards generally accepted in the United States of America and Government Auditing Standards, issued by the Comptroller General of the United States. Our responsibilities under those standards are further described in the Auditor's Responsibilities for the Audit of the Financial Statements section of our report. We are required to be independent of Educare and to meet our other ethical responsibilities in accordance with the relevant ethical requirements relating to our audit. We believe that the audit evidence we have obtained is sufficient and appropriate to provide a basis for our audit opinion.

Responsibilities of Management for the Financial Statements

Management is responsible for the preparation and fair presentation of the financial statements in accordance with accounting principles generally accepted in the United States of America, and for the design, implementation, and maintenance of internal control relevant to the preparation and fair presentation of financial statements that are free from material misstatement, whether due to fraud or error.

In preparing the financial statements, management is required to evaluate whether there are conditions or events, considered in the aggregate, that raise substantial doubt about Educare's ability to continue as a going concern within one year after the date that the financial statements are available to be issued.

4550 MONTGOMERY AVENUE • SUITE 800 NORTH • BETHESDA, MARYLAND 20814
(301) 951-9090 • WWW.GRFCA.COM

MEMBER OF CP&A INTERNATIONAL, AN AFFILIATE OF CROWE GLOBAL
MEMBER OF THE AMERICAN INSTITUTE OF CERTIFIED PUBLIC ACCOUNTANTS' PRIVATE COMPANIES PRACTICE SECTION

Auditor's Responsibilities for the Audit of the Financial Statements

Our objectives are to obtain reasonable assurance about whether the financial statements as a whole are free from material misstatement, whether due to fraud or error, and to issue an auditor's report that includes our opinion. Reasonable assurance is a high level of assurance but is not absolute assurance and therefore is not a guarantee that an audit conducted in accordance with generally accepted auditing standards and Government Auditing Standards will always detect a material misstatement when it exists. The risk of not detecting a material misstatement resulting from fraud is higher than for one resulting from error, as fraud may involve collusion, forgery, intentional omissions, misrepresentations, or the override of internal control. Misstatements, including omissions, are considered material if there is a substantial likelihood that, individually or in the aggregate, they would influence the judgment made by a reasonable user based on the financial statements.

In performing an audit in accordance with generally accepted auditing standards and Government auditing standards, we:

- Exercise professional judgment and maintain professional skepticism throughout the audit.
- Identify and assess the risks of material misstatement of the financial statements, whether due to fraud or error, and design and perform audit procedures responsive to those risks. Such procedures include examining, on a test basis, evidence regarding the amounts and disclosures in the financial statements.
- Obtain an understanding of internal control relevant to the audit in order to design audit procedures that are appropriate in the circumstances, but not for the purpose of expressing an opinion on the effectiveness of Educare's internal control. Accordingly, no such opinion is expressed.
- Evaluate the appropriateness of accounting policies used and the reasonableness of significant accounting estimates made by management, as well as evaluate the overall presentation of the financial statements.
- Conclude whether, in our judgment, there are conditions or events, considered in the aggregate, that raise substantial doubt about Educare's ability to continue as a going concern for a reasonable period of time.

We are required to communicate with those charged with governance regarding, among other matters, the planned scope and timing of the audit, significant audit findings, and certain internal control related matters that we identified during the audit.

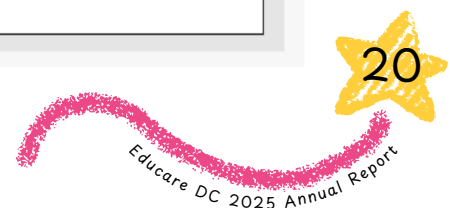
Report on Summarized Comparative Information

We have previously audited Educare's 2024 financial statements, and we expressed an unmodified audit opinion on those audited financial statements in our report dated December 9, 2024. In our opinion, the summarized comparative information presented herein as of and for the year ended June 30, 2024, is consistent, in all material respects, with the audited financial statements from which it has been derived.

Other Reporting Required by Government Auditing Standards

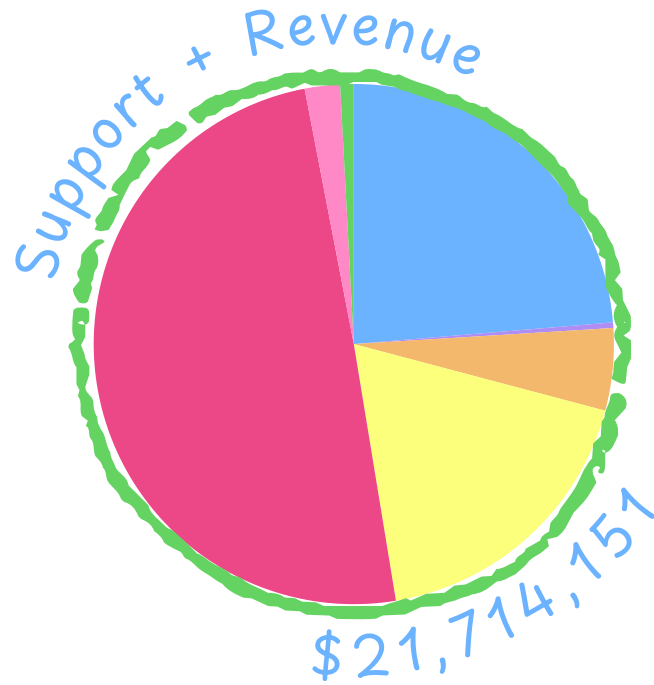
In accordance with Government Auditing Standards, we have also issued our report dated December 17, 2025, on our consideration of Educare's internal control over financial reporting and on our tests of its compliance with certain provisions of laws, regulations, contracts and grant agreements and other matters. The purpose of that report is solely to describe the scope of our testing of internal control over financial reporting and compliance and the results of that testing, and not to provide an opinion on the effectiveness of Educare's internal control over financial reporting or on compliance. That report is an integral part of an audit performed in accordance with Government Auditing Standards in considering Educare's internal control over financial reporting and compliance.

December 17, 2025



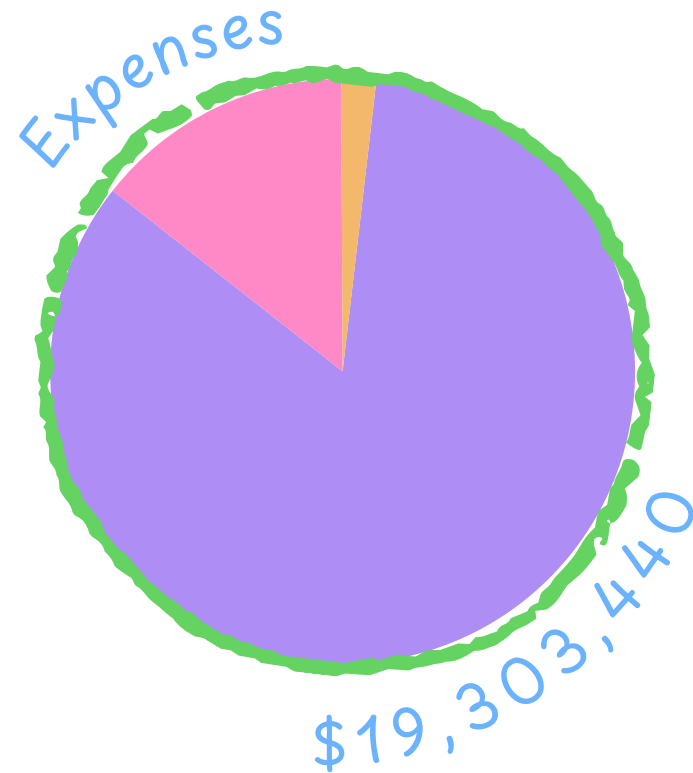
Revenue & Expenses Summary

Educare DC's fiscal year ended June 30, 2025



Federal Grants	\$10,760,977	49.6%
Foundations	\$5,140,000	23.7%
District of Columbia Grants	\$3,970,901	18.3%
In-Kind/Pro Bono Support	\$1,109,031	5.1%
Investments	\$476,026	2.2%
Misc. Income	\$182,522	0.8%
Individuals	\$74,694	0.3%

Program	\$16,168,465	84%
Management	\$2,765,767	14%
Fundraising	\$369,208	2%





Follow us on social media and share with your friends! Engage with all the amazing things our students, families, teachers, and staff are doing here at Educare DC!

Facebook: [/EducareWashingtonDC](https://www.facebook.com/EducareWashingtonDC)

Twitter: [@DCEducare](https://twitter.com/DCEducare)

Instagram: [@EducareDC](https://www.instagram.com/EducareDC)

LinkedIn: [Educare DC](https://www.linkedin.com/company/EducareDC)

Please join us for a tour of one of our state-of-the-art facilities to experience the magic happening right here at Educare DC for yourself! You'll see first-hand how our dedicated teachers and staff work with children so that they develop the skills they need to succeed in kindergarten and beyond. Just let us know you're interested by emailing us at development@educaredc.org.

At Educare DC, we believe that everyone deserves the opportunity to reach their full potential, regardless of their family's income or zip code. Your generosity can help us continue to welcome 375 children into our bright, lively, language rich classrooms each day! Help close the opportunity gap for young children. Visit educaredc.org/donate to learn how.



Parkside: 640 Anacostia Ave. NE | Washington, DC 20019
IDEA: 4501 Lee St. NE | Washington, DC 20019
202-727-5604

educaredc.org